

# Pacific Lamprey Papercraft

Build a life-size 3D Pacific lamprey! See page 2 for instructions and page 3 for an picture of the finished product.



# Instructions

## Materials needed: Scissors and craft glue

1. Cut out all pieces along black solid lines. Look at the completed models on page 3 to see where all the pieces will go and how they align.
2. Construct the body by matching the numbers and gluing the tabs. If you find that you are trying to connect two tube-like sections of the body and are having trouble, try using a pen or pencil as a brace on the inside of the tube while pressing from the outside.
3. Bend the tabs on the fin pieces you have cut out. Then glue both halves of each fin together (excluding the tabs) so that it forms a single fin with color on both sides. Glue the tabs of the fins to the surface of the body where indicated.

## Key to lines

Mountain fold

-----

Valley fold

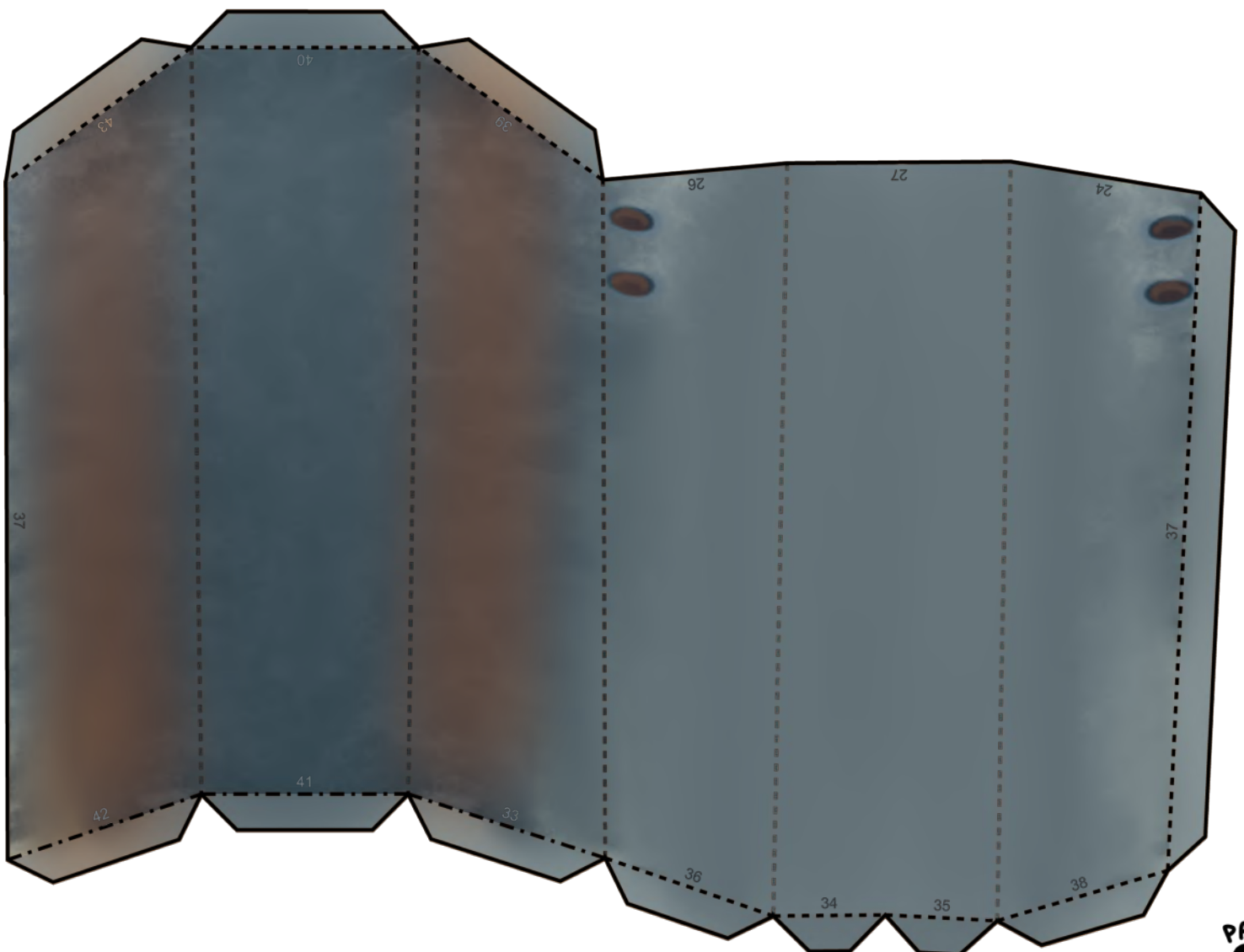
- - - - -

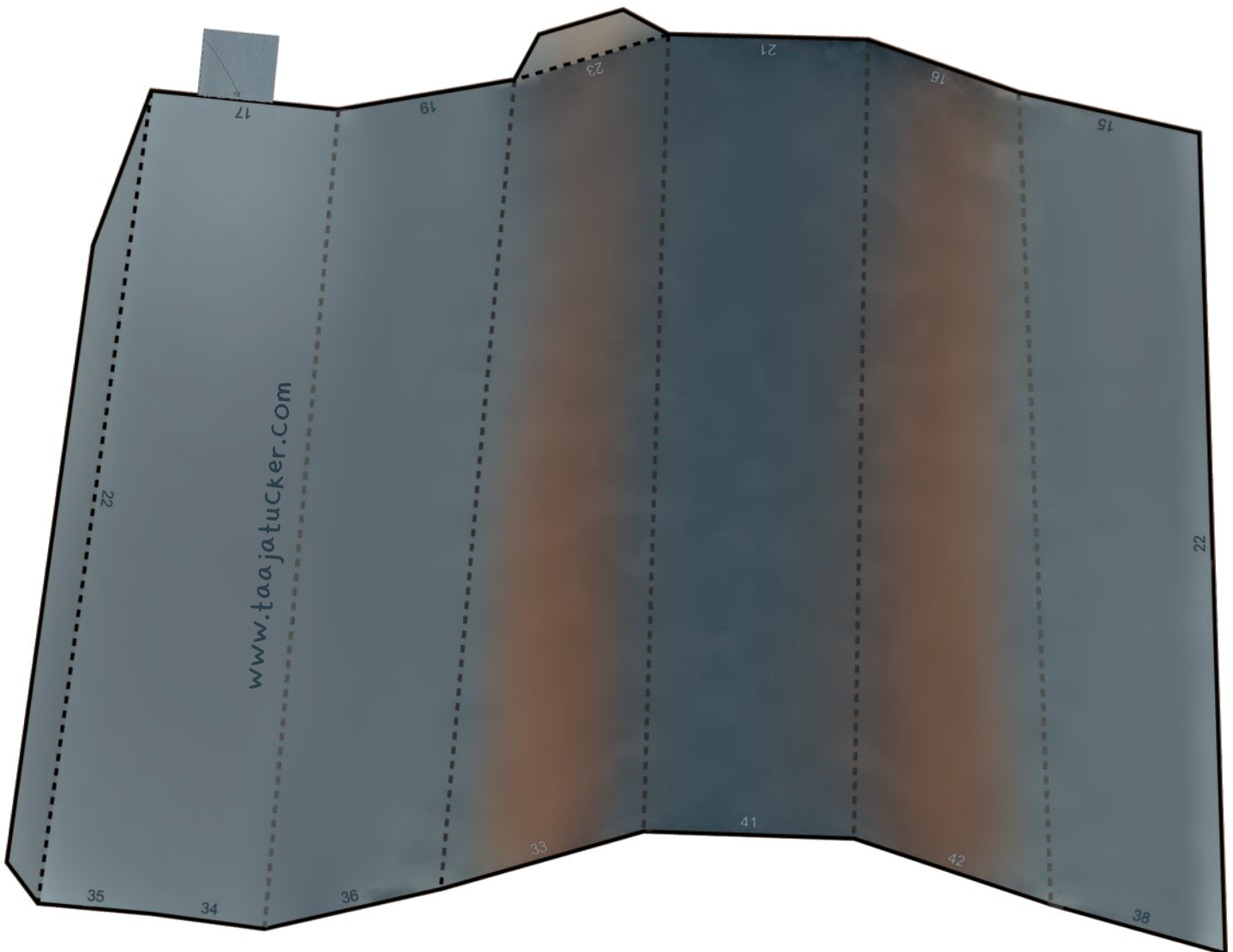
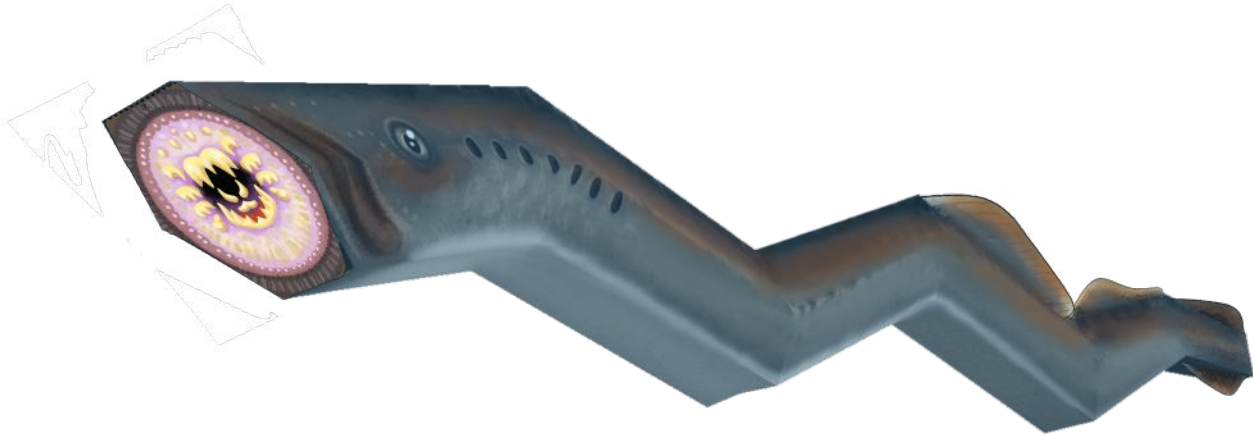
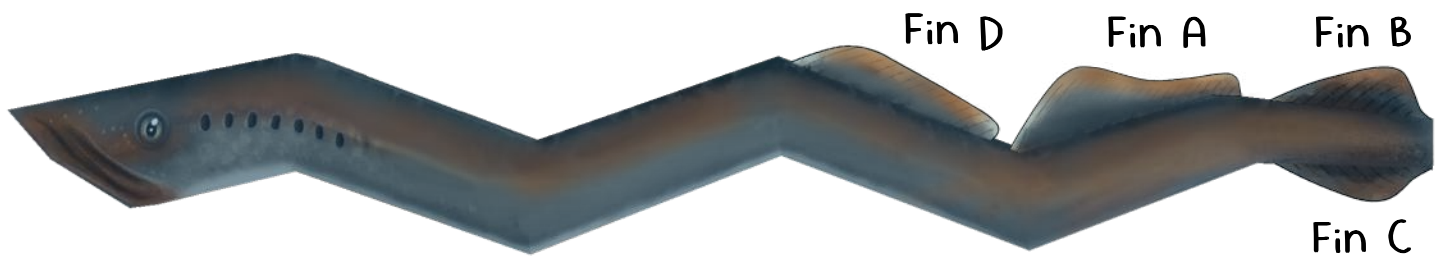
Cut line

\_\_\_\_\_

Attachment site

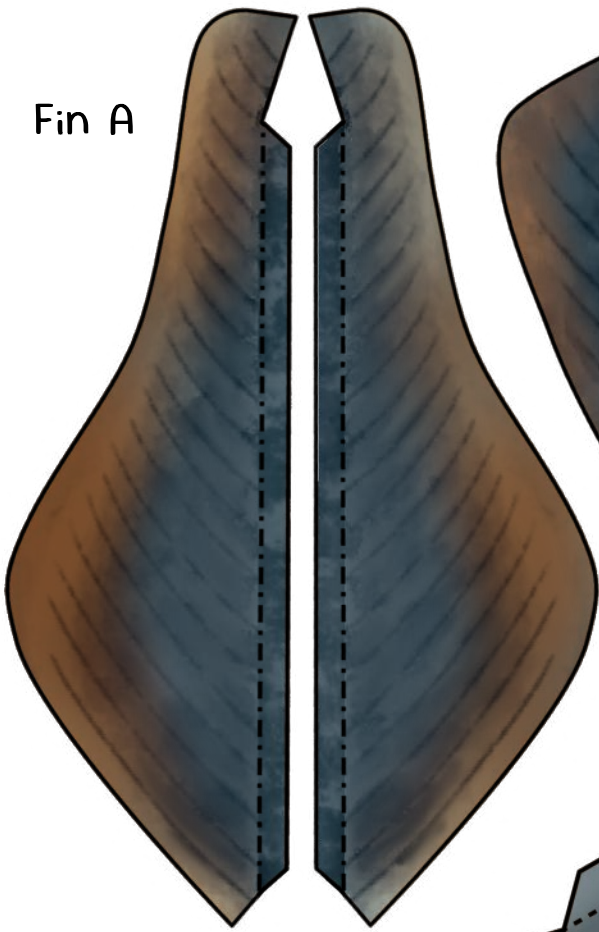
\_\_\_\_\_



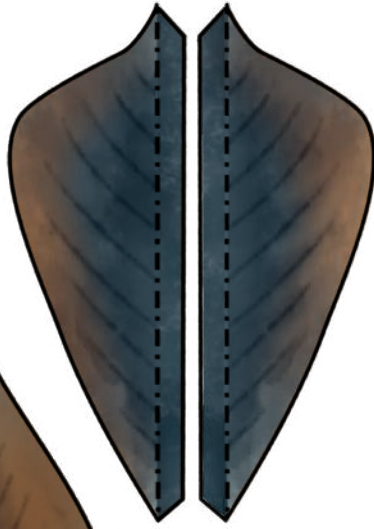




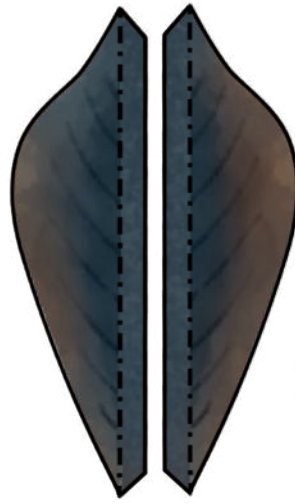
Fin A



Fin B



Fin C



Fin D

